

Installation Precautions:

1. Please read through the Instructions before installation.
2. The product should be installed by a professional electrician.
3. Make sure the power supply is cut off before installation and maintenance, to avoid the risk of electric shock.
4. To prevent the lamps from being submerged in water for a long time, drainage pipes or drainage devices should be installed at the bottom.
5. Please keep this Instruction properly for future reference.

Installation steps:

1. Installation of embedded parts(Figure 1):

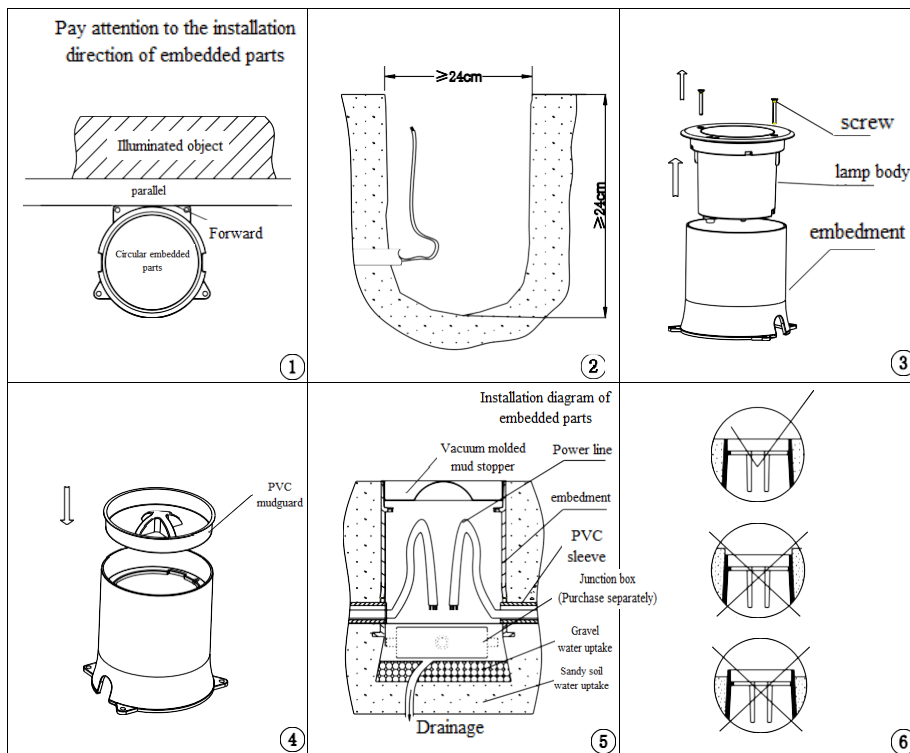


Figure 1

2. Installation of accessories(Figure 2). If the lamp does not require accessories, this step is not required;

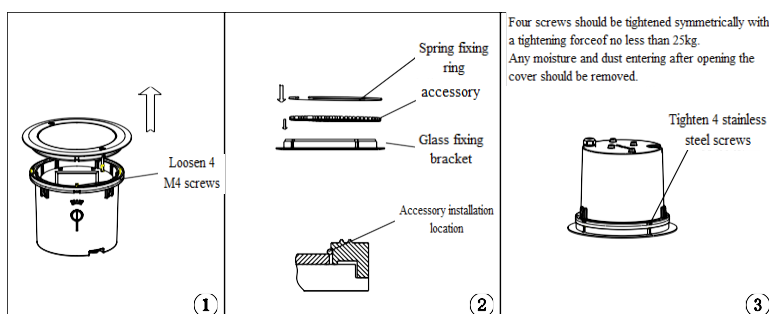


Figure 2

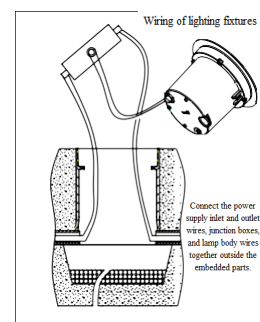


Figure 3

- Adjustment of the light outlet angle of the lamp (Figure 4);
- Fixation of lamp body and embedded parts (Figure 5).

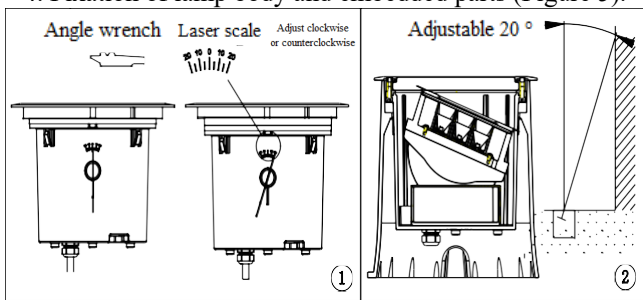


Figure 4

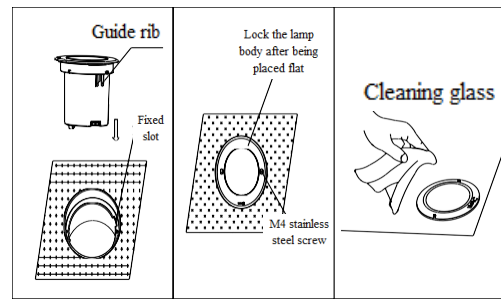
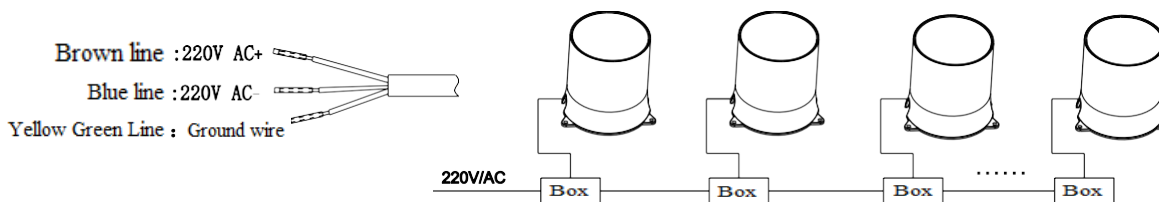


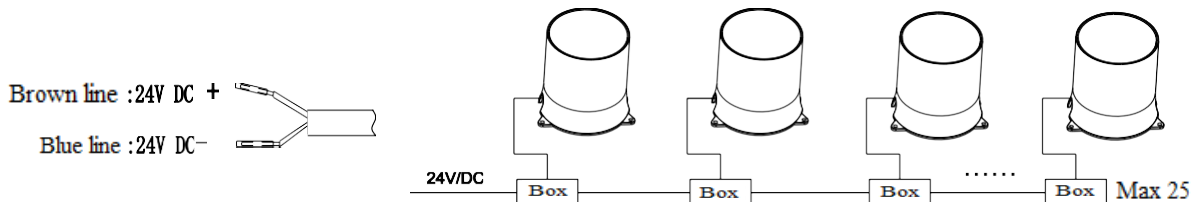
Figure 5

5. External wiring method of lighting fixtures:

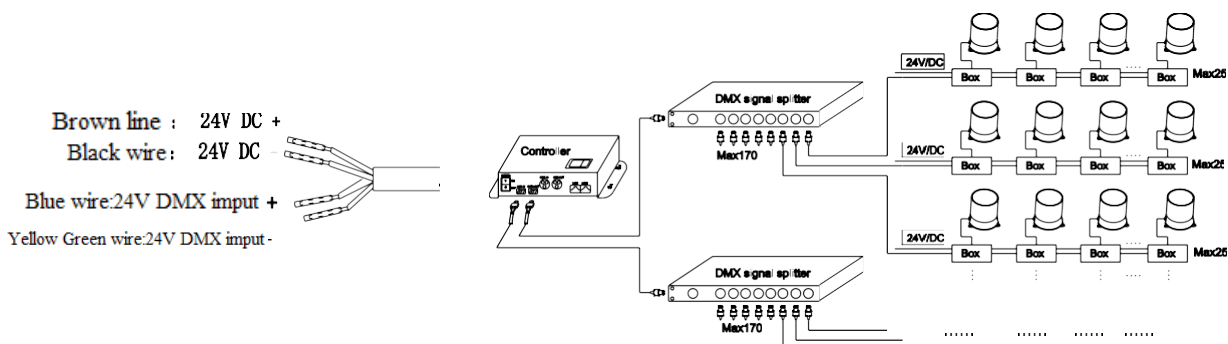
5.1 AC 220V/AC wiring method: 220V mains power, pay special attention to waterproof, and safe wiring;



5.2 Constant voltage 24V/DC wiring method:



5.3 Constant voltage 24V/DC DMX512 wiring method:



Installation Precautions:

1. Please read through the Instructions before installation.
2. The product should be installed by a professional electrician.
3. Make sure the power supply is cut off before installation and maintenance, to avoid the risk of electric shock.
4. To prevent the lamps from being submerged in water for a long time, drainage pipes or drainage devices should be installed at the bottom.
5. Please keep this Instruction properly for future reference.

Installation steps:

1. Installation of embedded parts(Figure 1):

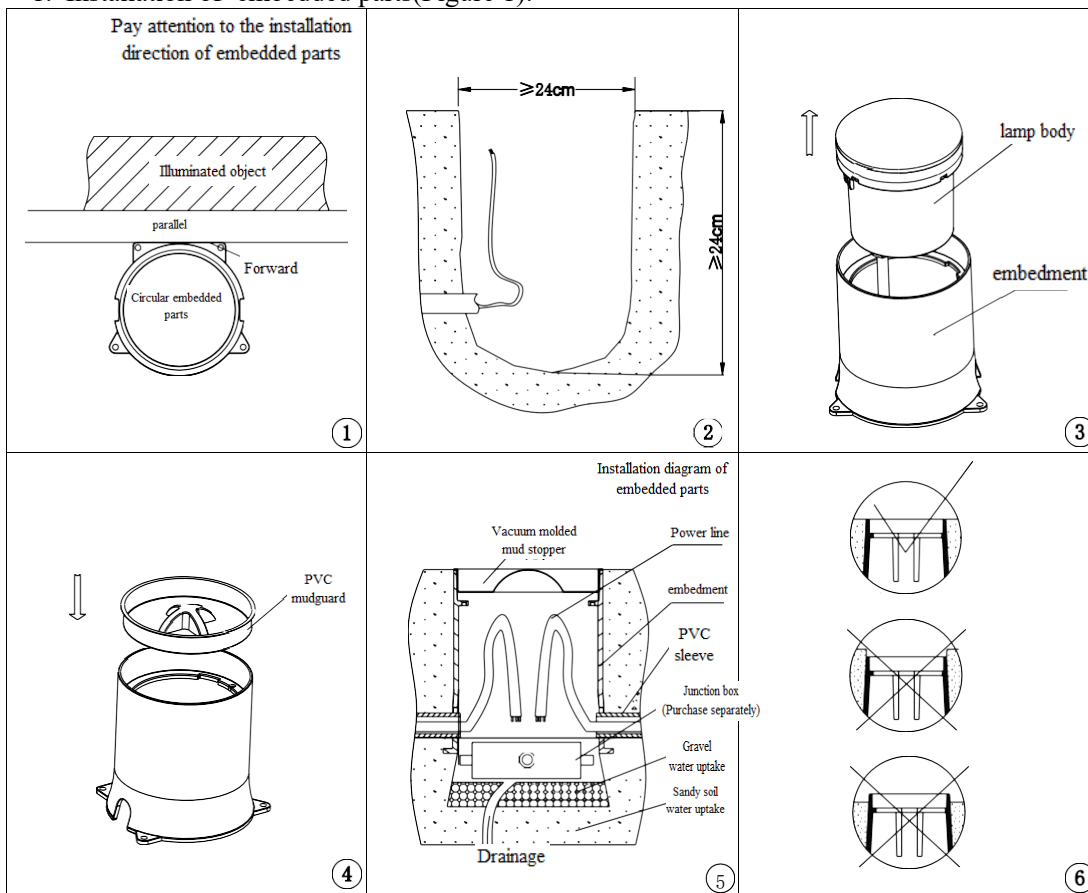


Figure 1

2. Installation of accessories(Figure 2).If the lamp does not require accessories,this step is not required;

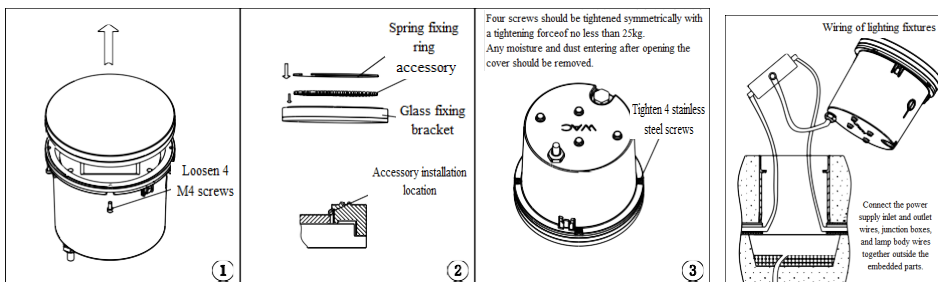


Figure 2

Figure 3

- Adjustment of the light outlet angle of the lamp (Figure 4);
- Fixation of lamp body and embedded parts (Figure 5).

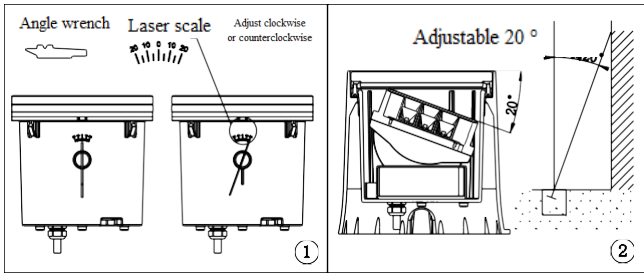


Figure 4

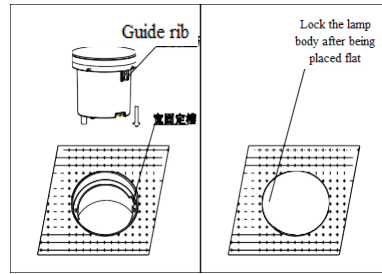
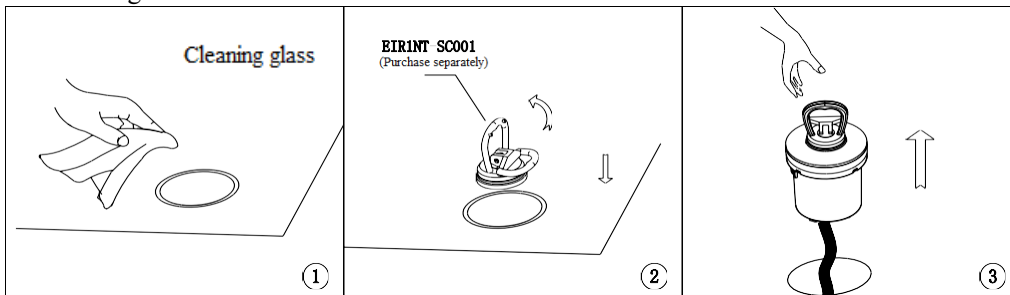


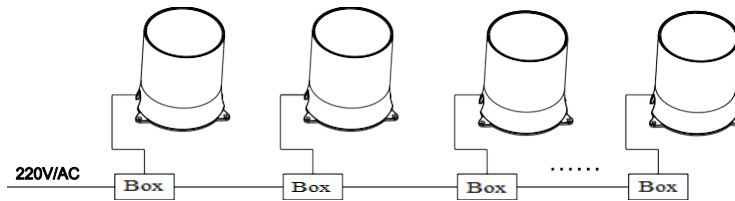
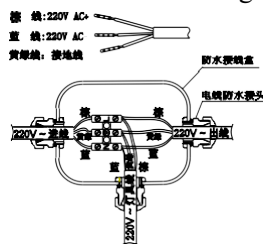
Figure 5

5. Cleaning and maintenance:

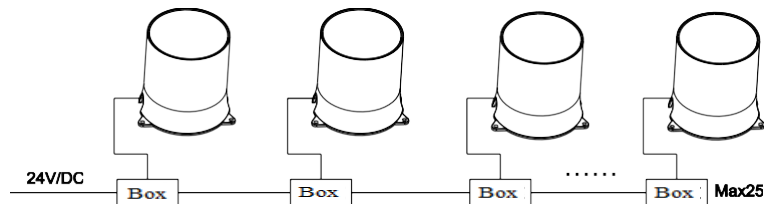
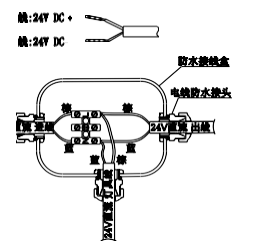


6. External wiring method of lighting fixtures:

6.1 AC 220V/AC wiring method: 220V mains power, pay special attention to waterproof, reliable, and safe wiring;



6.2 Constant voltage 24V/DC wiring method:



6.3 Constant voltage 24V/DC DMX512 wiring method:

